

Installation procedure for install Custom Engineering Status Monitor USB printers on Windows® 2000 and Windows® XP operating system.

This documentation is referred to KPM216H printer, but is the same for all other models made in Custom Engineering SPA provided with Status Monitor feature.

Introduction.

The Status Monitor is a layer software, that enable to know the printer status.

Status Monitor Installation for USB communication port.

Before install all Status Monitor components, verify if the USB Status Monitor option is enable on printer setup (to enter into printer setup, you must to follow the needed instruction into printer manual).

To install the staus monitor for KPM216H (200 and 300 dpi) on USB communication port, you must to follow the next steps:

- 1) Plug the printer into USB communication connector, and install needed printer drivers. In these condition the system detect a composite device and try to install some new components:
 - Specific Usb Printing Support (Provided by Microsoft) for the first interface of printer (this interface handle all byte that will be printed)
 - Specific Usb driver (CesiUsb) for second interface of printer (Provided by Custom Engineering SPA) for the second interface of printer (this interface is for status printer feed back).
- 2) Install printer driver with Language Monitor.
- 3) Print out a page (Print Test page is enough).
- 4) Instal CePrnSpy utility.

World Headquarter

CUSTOM ENGINEERING SPA

Via Berettine, 2 - 43010 Fontevivo Parma Italy
Tel. +39-0521-680111 (10 linee R.A.) Fax +39-0521-610701
P. I.V.A./: 01796910345 - Cap. Soc.: 1.002.000,00 euro I.V.
C.C.I.A.A. Parma N°179180 Reg. Soc. N°22723 Trib. Di PR
www.custom.it e-mail: custom@custom.it

Branch Offices

Via Pavia, 10 - 20053 Muggiò Milano Italy
Tel.: +39-039-2144280 Fax +39-039-2144249
www.custom.it e-mail: custom.milano@custom.it

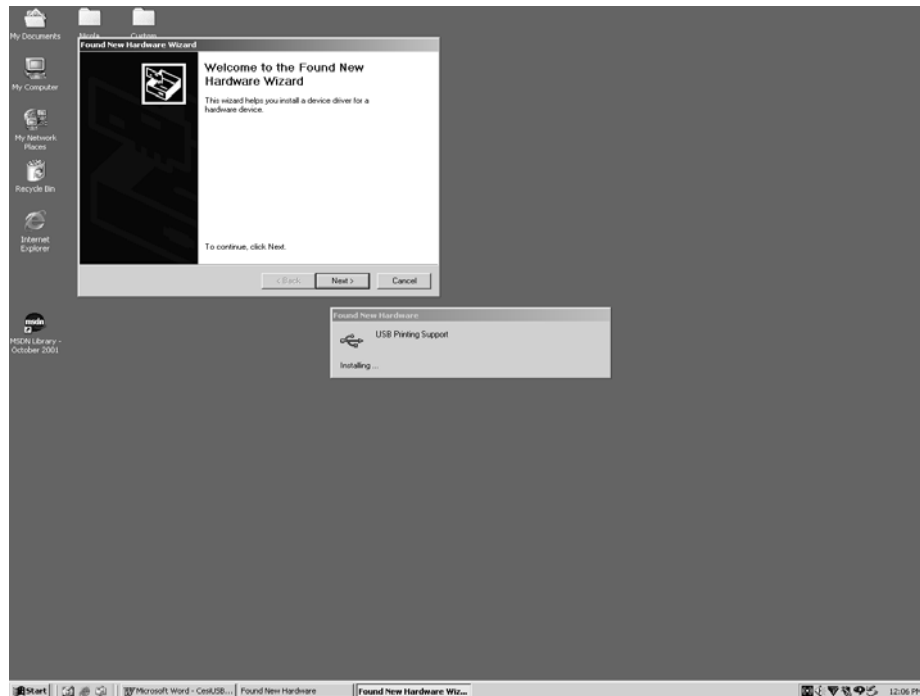
AZIENDA CON SISTEMA
DI QUALITA' CERTIFICATO
UNI EN ISO 9001



M.U.R.S.T.
Ministry University
Research Scientific
Technology
Authorized laboratory
n. 60846ZY2

1a) Install Usb Printing support.

Plug in the printer. The Plug and Play recognize a new printer model and the USB Printing Support will be load silently by system. Sometime may happen that the system don't load silently the USB Printing Support. In this rarely situation you must to complete the follow instructions.





The path showed above is the system directory path. The inf directory was a hidden directory (set up correctly your system, to display the hidden directory).





1b) Install CesiUsb driver.

The CesiUsb.sys driver is a WDM (Window Driver Model) driver to allow the feed back status printer into software application.

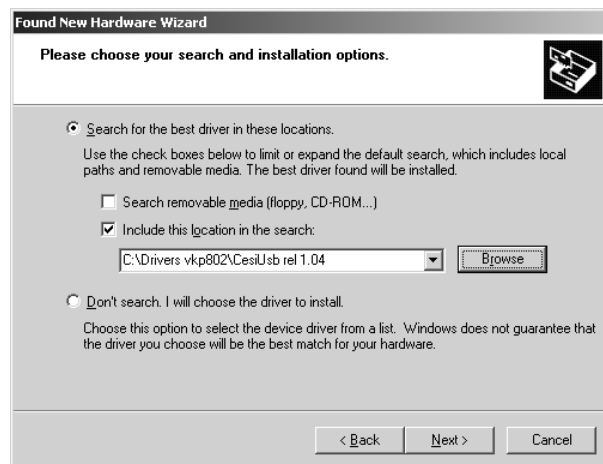
To install this driver you must complete the follow instructions:

- **Automatic Installation process:**

If appears the Hardware Wizard shown below, select “Install from a list or specific



locations” and go on. Select “Search for the best driver in these location” and check “Include this location in the search”. Choose the Path with CesiUsb and go on.



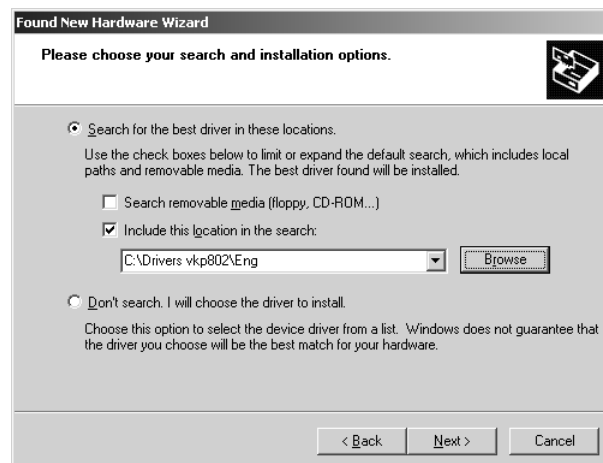
If no error occurs, the message below appears.



After this it appears Hardware Wizard to install Custom Driver.
Select “Install from a list or specific locations” and go on.



At the end choose the right path for Custom driver.

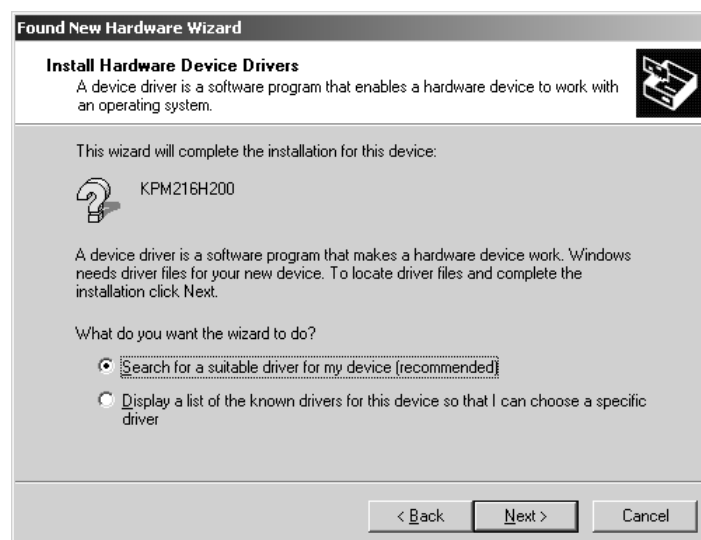
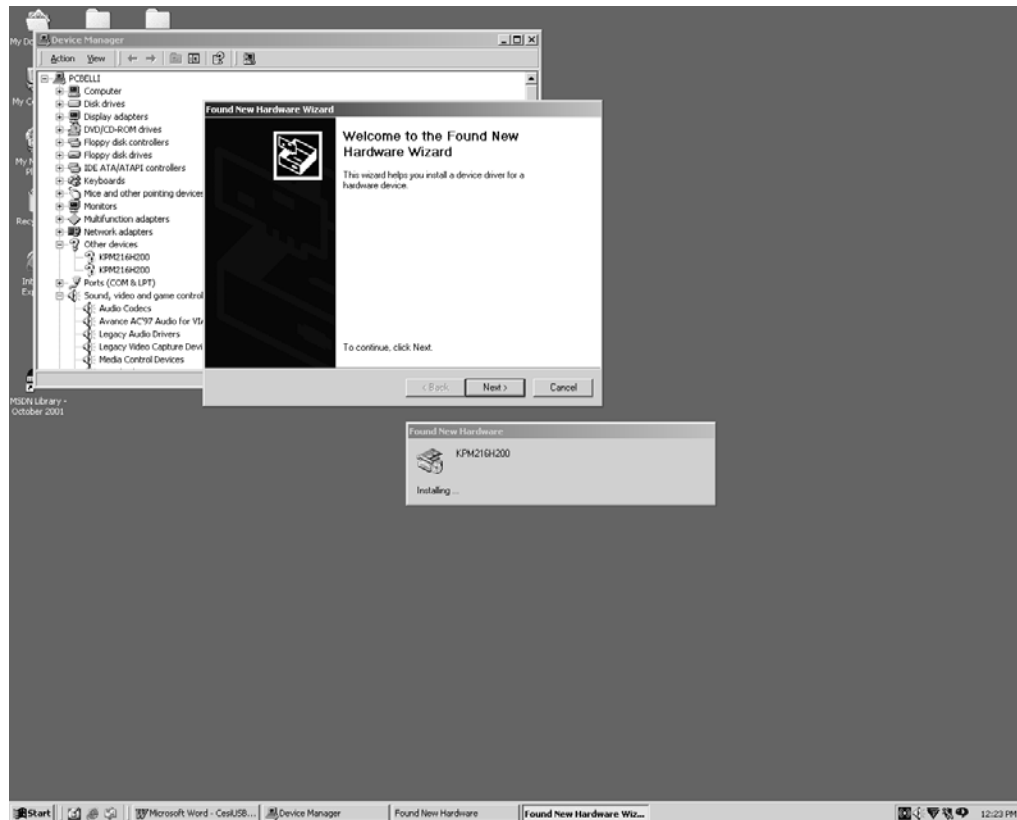


If whole the procedure is made without errors it appears the message below and new Hardware is ready to use.



- **Manual Installation process:**

In this case the procedure is the follow:



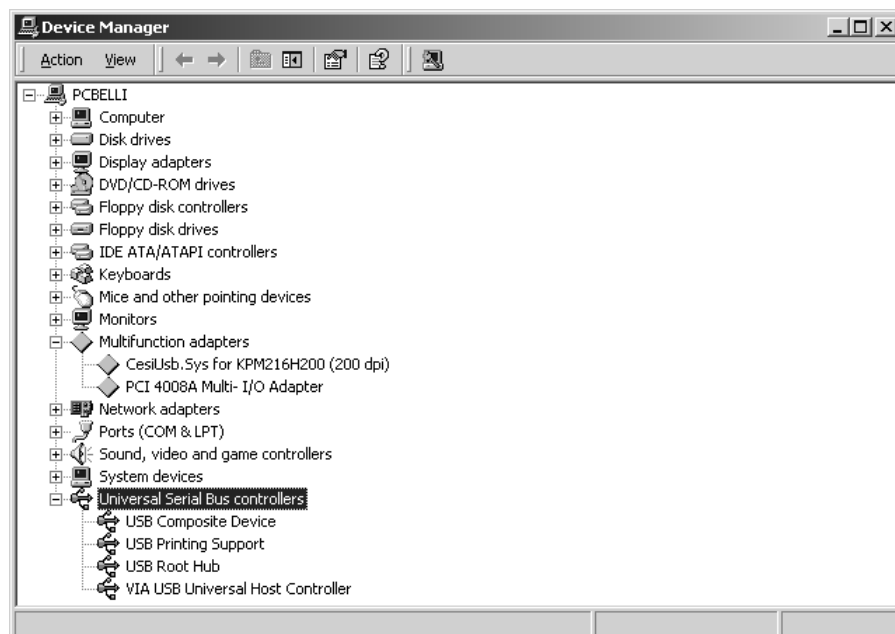


Now is necessary to specify a path location where the Wizzard will found the needed information file. All files (driver file and so on...) needed to complete the installation process are provoided into packet printer driver.



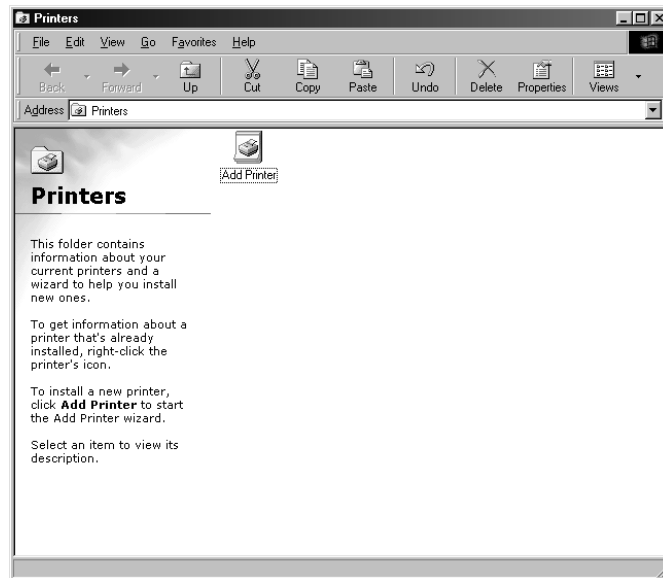


At the end of these steps the system component installed on system era showed into Device Manager Window.

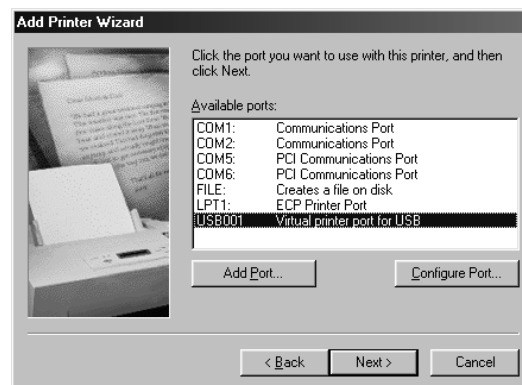


2) Install printer driver.

To install your Custom-USB printer driver you must to proceed with the standard procedure. Open the Printers Windows and double click on Add Printer icon.



Pay attention when you select the communication port: you must to select the Usb virtual port as showed above:



3) Try to print a page.

Print out a page; Print Test page is enough.

4) Install CePrnSpy utility.

This utility was provided by Custom Engineering SPA (you must to download it from our web site). Run the installation setup program to install it. More information about CePrnSpy are stored into documentation file installed with CePrnSpy.

